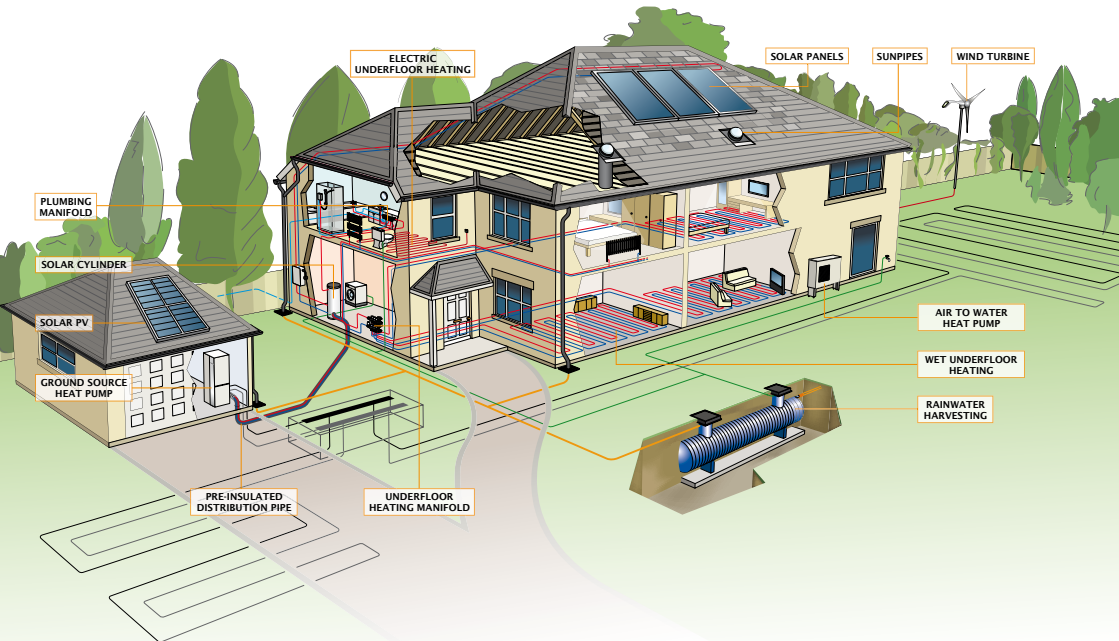


SIMPLEHEAT

geothermal



April 2010



For more information on our products and systems please view our website

www.ufw.co.uk

CONTENTS

Pipe	4
Accessories	4 - 6
Pre-Insulated Pipe Systems	6
Pre-Insulated Pipe Accessories	7
Armaflex Insulation	8
Manifolds	8 - 9
Fittings	10
Pumps	11
Chambers	11
Expansion Vessels	12
Brine & Fluids	12 - 13
Tools	13
Heat Pumps	14

PIPE



Ground Collector MDPE - PE100

Extruded from virgin polymer black PE100+ polyethylene, manufactured in accordance with EN12201-2 and general pipe standards, SDR11.

Description	Code	Pack Quantity	Price per metre (£)
40mm PE100 pipe 250m coil SDR17	SIMG4025017	250m	£1.65
40mm PE100 pipe 300m coil SDR17	SIMG4030017	300m	£1.65
40mm PE100 pipe 400m coil SDR17	SIMG4040017	400m	£1.65
40mm PE100 pipe 500m coil SDR17	SIMG4050017	500m	£1.65
40mm PE100 pipe 250m coil SDR11*	SIMG4025011	250m	£2.00
40mm PE100 pipe 300m coil SDR11*	SIMG4030011	300m	£2.00
40mm PE100 pipe 400m coil SDR11*	SIMG4040011	400m	£2.00
40mm PE100 pipe 500m coil SDR11*	SIMG4050011	500m	£2.00
50mm PE100 pipe 50m coil SDR11	SIMG505011	50m	£3.10
63mm PE100 pipe 50m coil SDR11	SIMG635011	50m	£4.60

*available to order



Probe Collector Duo - PE100

Made of high density polyethylene (RAU-PE100) according to DIN 8074/75, UV-stabilised, black colour. Duo collector, SDR11.

Description	Code	Pack Quantity	Price each (£)
40mm PE100 duo 80m length (320m)	SIMG136316	320m	£881.25
40mm PE100 duo 102m length (408m)	SIMG136336	408m	£1,025.00
40mm PE100 duo 152m length (608m)	SIMG136366	608m	£1,368.75

ACCESSORIES



Probe Weight

For simple insertion of the probe into the borehole. Made of steel.

Description	Code	Pack Quantity	Price each (£)
Probe weight 12.5kg	SIMG352400	1pc.	£75.00
Probe weight 25kg	SIMG352410	1pc.	£102.50

ACCESSORIES (CONTINUED)

Insertion Aid



Used as a support rod for inserting probes into a borehole. Add the insertion aid to the DUO probe with weight connection set1.

Description	Code	Pack Quantity	Price each (£)
Insertion aid for PE100 probe pipes	SIMG352420	1pc.	£15.00

Weight Connection Set



For an installation of a probe weight (or insertion aid between probe pipes) to PE Duo probe , includes fastening materials. Made of steel.

Description	Code	Pack Quantity	Price each (£)
Weight connection set 1 (duo)	SIMG352430	1pc.	£8.75

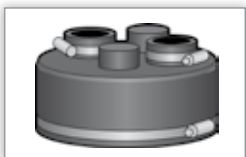
Warning Strip



Trench warning tape 250m strip (40mm wide).

Description	Code	Pack Quantity	Price each (£)
Warning strip 250m (40mm wide)	SIMG222929	1pc.	£25.00

Rubber Hood



Pressure sealed 138-168mm.

Description	Code	Pack Quantity	Price each (£)
Pressure sealed rubber hood (138-168mm)	SIMG1002163	1pc.	£83.15

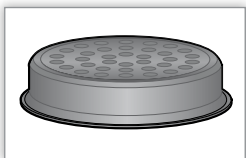
Expander Cap



Expander cap for steel pipe 138-168mm.

Description	Code	Pack Quantity	Price each (£)
Expander cap	SIMG1002161	1pc.	£51.62

Snap Lid



Snap lid for 315mm inspection chamber.

Description	Code	Pack Quantity	Price each (£)
Snap lid	SIMG1002367	1pc.	£5.71

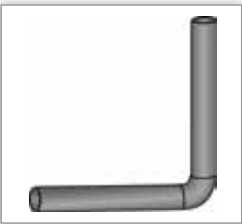
ACCESSORIES (CONTINUED)



Tee Pipe

40mm with air bleeder.

Description	Code	Pack Quantity	Price each (£)
40mm Tee pipe with air bleeder	SIMG1002164	1pc.	£25.07

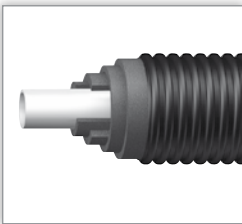


Wall Elbow

40mm. L=1m.

Description	Code	Pack Quantity	Price each (£)
40mm Wall Elbow	SIMG1002166	1pc.	£22.24

PRE-INSULATED PIPE SYSTEMS



Thermo Single

Pre-insulated single pipe PEX, max 6 bar/95°C heating. First number is pipe OD, second number is the outer jacket OD.

Description	Code	Price metre (£)
25/140	SIMGS25	£30.07
32/140	SIMGS32	£32.66
40/175	SIMGS40	£42.84
50/175	SIMGS50	£45.86
63/175	SIMGS63	£51.96



Thermo Twin

Pre-insulated Twin pipe PEX, max 6 bar/95°C heating. First two numbers are pipe OD, second number is the outer jacket OD.

Description	Code	Price per metre (£)
2x25/175	SIMGDB25	£41.21
2x32/175	SIMGDB32	£46.85
2x40/175	SIMGDB40	£50.51
2x50/200	SIMGDB50	£69.02
2x63/200	SIMGDB63	£83.31

All pre-insulated pipe is available cut to the nearest required metre.

PRE-INSULATED PIPE ACCESSORIES

Couplings



Wipex coupling, 6 bar/95°C, compression fitting with male thread for connection.

Description	Code	Pack Quantity	Price each (£)
25x1"	SIMGMC25	1pc.	£18.14
32x1"	SIMGMC32	1pc.	£19.94
40x1 1/4"	SIMGMC40	1pc.	£26.19
50X1 1/4"	SIMGMC50	1pc.	£35.18
63X2"	SIMGMC63	1pc.	£59.92

Elbows



Wipex 90° bend.

Description	Code	Pack Quantity	Price each (£)
1"	SIMGELB1	1pc.	£16.14
1 1/4"	SIMGELB1A	1pc.	£20.19
2"	SIMGELB2	1pc.	£47.95

Elbow Insulation set



For use with Wipex fittings within a trench.

Description	Code	Pack Quantity	Price each (£)
One size	SIMGELBINS	1pc.	£268.53

Rubber End Caps



Rubber end-cap set including clamping ring.

Description	Code	Pack Quantity	Price each (£)
Twin25+32+40/175	SIMGENDC1	1pc.	£33.42
Twin40+50+63/200	SIMGENDC2	1pc.	£37.72
25+32/140	SIMGENDC3	1pc.	£28.23
32+40+50/175	SIMGENDC4	1pc.	£34.32
63+75/175	SIMGENDC5	1pc.	£34.32

ARMAFLEX INSULATION

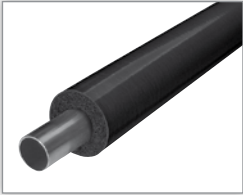
Class O, 13mm



Class O Armaflex is flexible, closed cell, elastomeric, nitrile rubber insulation which reduces energy loss by up to 87%.

Description	Code	Pack Quantity	Price metre (£)
Class O Armaflex 2m length 43.5ID	SIMG13x42CO	1pc.	£3.95
Class O Armaflex 2m length 55ID	SIMG13x54CO	1pc.	£6.78
Class O Armaflex 2m length 68ID	SIMG13x67CO	1pc.	£8.50

Tuffcoat, 13mm



Tuffcoat Armaflex is flexible, closed cell, elastomeric, nitrile rubber insulation with polymeric coating.

Description	Code	Pack Quantity	Price metre (£)
Tuffcoat Armaflex black 2m length 43.5ID	SIMG13x42BK	1pc.	£16.30
Tuffcoat Armaflex black 2m length 55ID	SIMG13x54BK	1pc.	£20.10
Armaflex Tape 15m	SIMGTAPE	1pc.	£13.95

MANIFOLDS

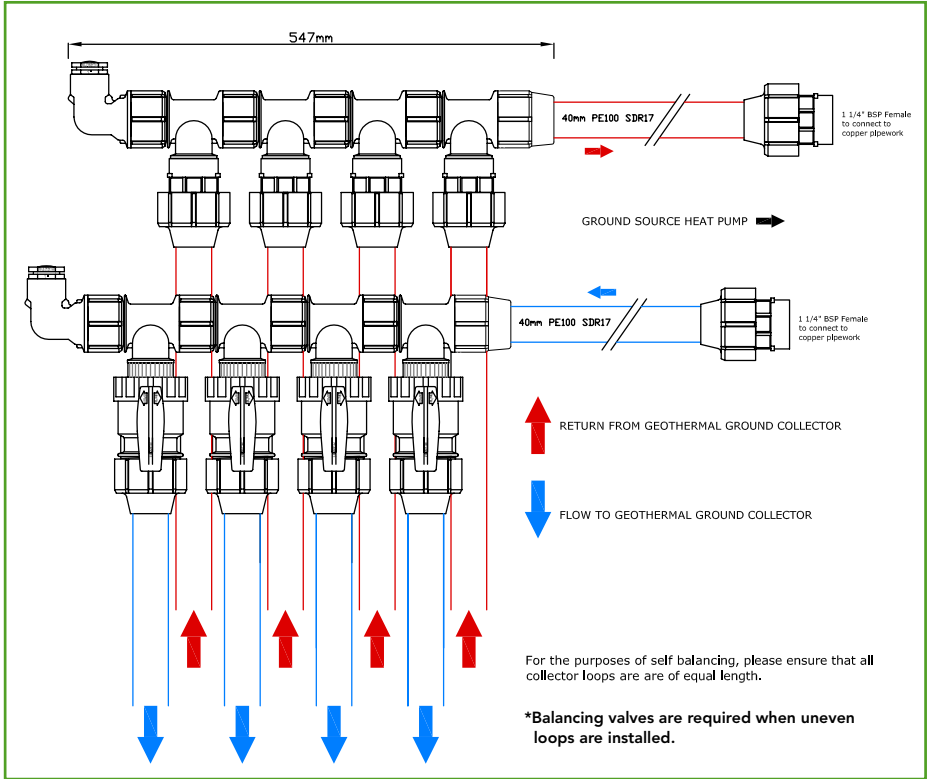
Modular Manifolds








Description	Code	Pack Quantity	Price each (£)
40x11/4" Male Modular Tee	SIMG795640	1pc.	£42.81
50x11/4" Male Modular Tee	SIMG795650	1pc.	£60.00
63x11/4" Male Modular Tee	SIMG795663	1pc.	£83.75
40x1" Female Threaded Elbow	SIMG715040	1pc.	£16.75
50x1" Female Threaded Elbow	SIMG715050	1pc.	£18.75
63x11/4" Female Threaded Elbow	SIMG715063	1pc.	£23.53
40x11/4" Ball Valve	SIMG137940	1pc.	£29.06
11/4"x1" Threaded Reducing Bush	SIMG50271	1pc.	£2.08
1" Threaded Plug	SIMG51771	1pc.	£1.61
11/4"x1" Threaded Reducing Nipple	SIMG50651	1pc.	£2.67
Balancing Valve *	SIMGZ5032	1pc.	£88.00
40x11/4" female adaptor BSP	SIMG703040	1pc.	£12.25
50x11/4" female adaptor BSP	SIMG703050	1pc.	£16.75
63x2" female adaptor BSP	SIMG703063	1pc.	£21.00

*Balancing valves are required when uneven loops are installed.

MANIFOLD ASSEMBLY



Items Required for a 4 Loop Geothermal Manifold

	8 x SIMG795640	40 x 1 1/4" Male Modular Tee
	2 x SIMG715040	40 x 1" Female Threaded Elbow
	2 x SIMG51771	1" Male Threaded Plug
	4 x SIMG137940	40 x 1 1/4" Ball Valve
	6 x SIMG703040	40 x 1 1/4" Female Adaptor BSP Thread

For more technical assistance please call our Technical Team on 0116 258 1410

FITTINGS



Straight Couplers

Compression straight couplers for polyethylene pipes.

Description	Code	Pack Quantity	Price each (£)
40mm Straight Coupler	SIMG701040	1pc.	£17.06
50mm Straight Coupler	SIMG701050	1pc.	£17.77
63mm Straight Coupler	SIMG701063	1pc.	£25.97



Reducing Couplers

Compression reducing couplers for polyethylene pipes.

Description	Code	Pack Quantity	Price each (£)
40x32mm Reducing Coupling	SIMG71104032	1pc.	£18.43
50x40mm Reducing Coupling	SIMG71105040	1pc.	£24.68
63x40mm Reducing Coupling	SIMG71106340	1pc.	£31.24
63x32mm Reducing Coupling	SIMG71106332	1pc.	£31.24



End Plugs

Compression end plug for polyethylene pipes.

Description	Code	Pack Quantity	Price each (£)
40mm End Plug	SIMG712040	1pc.	£11.46
50mm End Plug	SIMG712050	1pc.	£15.29
63mm End Plug	SIMG712063	1pc.	£25.62



BSP Adaptor M1

Compression male adaptor BSP thread for polyethylene pipes.

Description	Code	Pack Quantity	Price each (£)
40x1 1/4" Male Adaptor BSP Thread	SIMG702040	1pc.	£10.63
50x1 1/4" Male Adaptor BSP Thread	SIMG702050	1pc.	£13.58
63x1 1/4" Male Adaptor BSP Thread	SIMG702063	1pc.	£18.20



BSP Adaptor F1

Compression female adaptor BSP thread for polyethylene pipes.

Description	Code	Pack Quantity	Price each (£)
40x1 1/4" Female Adaptor BSP Thread	SIMG703040	1pc.	£12.25
50x1 1/4" Female Adaptor BSP Thread	SIMG703050	1pc.	£16.71
63x2" Female Adaptor BSP Thread	SIMG703063	1pc.	£21.00

PUMPS



Description	Code	Pack Quantity	Price each (£)
UPS 25-60 pump bare	SIMUPS2560	1pc.	£110.00
UPS 25-55 pump with 1" union	SIMUPS2555	1pc.	£220.00
UPS 25-80 pump with 1.25" union	SIMUPS2580	1pc.	£259.00

CHAMBERS



RapidSTACK+ is the total composite chamber solution for B125 applications. It is stronger than typical thermoplastic alternatives and performs against diverse temperature changes from -40°C to +140°C.

Description	Code	Pack Quantity	Price per metre (£)
600x600x150mm Rapidstack+ Chamber Ring	SIMG600R	1pc.	£57.85
900x600x150mm Rapidstack+ Chamber Ring	SIMG900R	1pc.	£71.85
1200x600x150mm Rapidstack+ Chamber Ring	SIMG1200R	1pc.	£104.73
600x600 Composite (antislip) cover	SIMG600C	1pc.	£141.23
600x450 Composite (antislip) cover	SIMG450C	1pc.	£129.00
Central removable bar for 900 chamber	SIMGBR900	1pc.	£85.00
Central removable bar for 1200 chamber	SIMGBR1200	1pc.	£85.00
Standard Galvanised locking bracket - pair	SIMGSBLT	1pc.	£13.75
CRB Galvanised locking bracket - pair	SIMGCRBLT	1pc.	£12.00

Chamber range available from 600mm to 2500mm. Prices on application.

EXPANSION VESSELS



Designed for brine fluid expansion on ground loop circuits. Shell made of Carbon steel cold pressed, maximum working temperature 70°C-99°C.

Description	Code	Pack Quantity	Price each (£)
Brine Expansion Vessel 24 litre	SIMGEO24	1pc	£64.11
Brine Expansion Vessel 35 litre	SIMGEO35	1pc	£121.68
Brine Expansion Vessel 50 litre	SIMGEO50	1pc	£146.52
Brine Expansion Vessel 80 litre	SIMGEO80	1pc	£274.74
Brine Expansion Vessel 105 litre	SIMGEO105	1pc	£313.98
Brine Expansion Vessel 150 litre	SIMGEO150	1pc	£414.72
Brine Expansion Vessel 200 litre	SIMGEO200	1pc	£510.24
Brine Expansion Vessel 250 litre	SIMGEO250	1pc	£750.96

BRINE & FLUIDS



HP Fluid Concentrate

Concentrated heat transfer fluid suitable for use in Air and Ground Source Heat Pumps. Frost protection from -14°C to -34°C, protects against corrosion, limescale and bacterial contamination. Non toxic, PH stable.

Description	Code	Pack Quantity	Price each (£)
HP Fluid Concentrate	SIMGHP1525C	25 Ltr.	£82.86



HP Fill

Especially formulated to give biocide protection to ground loops and bore holes against a broad spectrum of bacterial contamination after installation up to the point of commissioning. 1ltr tub treats up to 600m of 40mm pipework.

Description	Code	Pack Quantity	Price each (£)
HP Fill	SIMGHPFIII	1 Ltr.	£33.20



HP Cleaner

Specifically formulated to lift off and remove bacterial slime and other contamination that may have accumulated within the ground loop. 1ltr tub treats up to 600m of 40mm pipework.

Description	Code	Pack Quantity	Price each (£)
HP Cleaner	SIMGHPCLN	1ltr	£33.20

BRINE & FLUIDS (CONTINUED)



HP Test Strips

To be used to test glycol/water mix quality within ground loops.

Description	Code	Pack Quantity	Price each (£)
Test strips	SIMG60STRP	60pcs.	£21.35

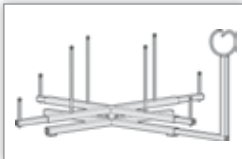
TOOLS



Refractometer

Easy to use high quality antifreeze test instrument with adjustable eye piece.

Description	Code	Pack Quantity	Price each (£)
Refractometer	SIMGREFMTR	1pc.	£120.00



Collector Spool

Assembly aid for ground collectors.

Description	Code	Pack Quantity	Price each (£)
Collector spool	SIMG1002137	1pc.	£1,296.00



Brine Filling Machine

Portable pump and reservoir method of filling the system with geothermal glycol.

Description	Code	Pack Quantity	Price each (£)
Brine Filling Machine	SIMGBRMCH	1pc.	£995.00



Pipe Cutter

12-40mm pipe cutter.

Description	Code	Pack Quantity	Price each (£)
Pipe Cutter 12-40mm	SIMGCUTER	1pc.	£35.00



Pipe Cutting Tool

25-63mm cutting tool.

Description	Code	Pack Quantity	Price each (£)
Pipe Cutting Tool 25-63mm	SIMGCUTTLL	1pc.	£40.00
Spare Cutting Disc	SIMGCUTDSC	1pc.	£3.50

HEAT PUMPS



Ground Source 1 Phase

Ground source heat pumps are ideal for underfloor heating and water-filled radiators. They tap into highly stable temperatures below the earth's surface to provide a consistent source of energy all year round.

Description	Code	Price each (£)
F1145-5kW	665241	POA
F1145-8kW	665243	POA
F1145-12kW	665245	POA
F1245-5kW	665401	POA
F1245-8kW	665403	POA
F1245-12kW	665405	POA



Ground Source 3 Phase

Ground source heat pumps are ideal for underfloor heating and water-filled radiators. They tap into highly stable temperatures below the earth's surface to provide a consistent source of energy all year round.

Description	Code	Price each (£)
F1145-15kW	665257	POA
F1145-17kW	665259	POA
F1330-22kW	065100	POA
F1330-30kW	065101	POA
F1330-40kW	065102	POA
F1330-60kW	065103	POA

Air to Water Packs

Designed for water based heating systems, dockable with most electric, oil & gas boilers. Utilises the outside air so there is no need for bore holes or coils in the ground. Available in 6,8 & 11kW on single phase with different control options.



Description	Code	Price each (£)
Pack 1-6kW	PAW0016	POA
Pack 1-8kW	PAW0018	POA
Pack 1-11kW	PAW0111	POA
Pack 2-8kW	PAW0028	POA
Pack 2-11kW	PAW0211	POA
Pack 3-8kW	PAW0038	POA
Pack 3-11kW	PAW0311	POA
Pack 4-6kW	PAW0046	POA
Pack 4-8kW	PAW0048	POA
Pack 4-11kW	PAW0411	POA
Pack 5-6kW	PAW0056	POA
Pack 5-8kW	PAW0058	POA
Pack 5-11kW	PAW0511	POA
Pack 6-8kW	PAW0068	POA
Pack 6-11kW	PAW0611	POA
Pack 7-6kW	PAW0076	POA
Pack 7-8kW	PAW0078	POA



Full underfloor heating offering available...



...ask for our pricelist
or view our website
www.ufw.co.uk



Tel 0116 258 1410

Email enquiries@ufw.co.uk

Web www.ufw.co.uk

Unit 2, Ecohub, Winchester Avenue, Blaby, LE8 4GZ



www.ufwarehouse.co.uk

Your local Simpleheat Geothermal
distributor / installer / retailer

Prices shown are effective from 1st April 2010, however we reserve the right to change prices at any time without prior notice